

M R R A N E W S L E T T E R

SPRING 2005

WELCOME NEW MEMBERS



MINNESOTA
RESOURCE
RECOVERY
ASSOCIATION

The MRRRA is pleased to welcome the following new vendor affiliate members to the MRRRA. Contract individuals have been included.

- **Alternative Resources, Inc.**—Jim Osborn
- **Barlow Projects, Inc.**—Jim Barlow
- **Cutler Magner**—Terry Spooner
- **Detroit Stoker/Plum Company**—Matt Frost
- **Earth Tech**—Keith Anderson
- **HDR**—Matt Clark
- **Interpoll Laboratories**—Kathy Eickstadt
- **McCain & Associates**—John McCain

- **U.S. Water**—Steve Tapper
- **Wenck Associates, Inc.**—Sam Lucido
- **Wrigley Mechanical**—Keith Lingle

On behalf of the MRRRA, I would like to thank you for your support of the organization and

APRIL MRRRA MEETING

MEET THE NEW MEMBERS AND TOUR THE SOUTH METRO RESOURCE RECOVERY FACILITY

A new member celebration will be held at the April 22, 2005 MRRRA meeting. The meeting will be hosted by South Metro Resource Recovery Facility. The meeting will be from 10 a.m. to 2 p.m. and held at Dangerfield's Restaurant. After lunch, we will tour the South Metro Resource Recovery Facility.

Meeting Location

Dangerfield's Restaurant
Atrium Room
1583 East First Avenue
(Highway 101)
Shakopee

Tour Location

1320 Dem-Con Drive
Shakopee
The facility is located south of Shakopee on 169 about one mile south of Hwy 41.

Facility Background

The South Metro Resource Recovery Facility is a demonstration project with the State of Minnesota and the following partners: Alliance Technology Group; On-Mark Development; Specialized Environmental Technology; Great River Energy; and NRG Processing Solutions.

The demonstration project uses

thermal processing technology to derive RDF fuel. The waste is processed by the use of a thermal vessel to separate out the recyclables and plastics from the organic fraction of the waste stream.

Benefits of thermal processing include:

- Reduced plastics and chlorine in RDF;
- Reduced ash in fuel; and
- More recyclables.

If you have any questions, please contact Kevin Tritz at 952-946-6999 or Kate Theisen at 651-222-7227.

INSIDE THIS ISSUE:

WELCOME NEW MEMBERS AND APRIL MEETING	1
OPERATING TRAINING CERTIFICATION	2
MRRRA BARBEQUE	2
JUNE MEETING	2
2005 LEGISLATIVE UPDATE	3
SCHEDULE OF SPRING EVENTS	4
A LOOK AT WTE IN MINNESOTA	5

OT CERTIFICATION COURSE—NEXT STEPS!

The Operating Training (OT) Certification Course is held twice annually. The manual underwent revision in January 2004 and was updated with graphics in the fall of 2004. This updated manual was used during the October 2004 OT Certification Course

and was well received.

The revised manual, with the help of the OT Committee, is almost complete. The final graphics will be completed and incorporated by summer of 2005.

The OT Committee has hired Peter Torkelson to complete

the OT teaching materials and to be the OT Certification Course Coordinator.

See Schedule of Spring Events for more details on the upcoming April OT Certification Course.

Spaces are still available.

MARRA BARBEQUE



Please plan to join us for the MARRA Summer Barbeque to be held in the evening of

June 16, 2005 in Fosston, Minnesota. The barbeque will be held at Bill Wilson's farm located eight miles south of Fosston. This is a great opportunity to socialize with your fellow MARRA members. The barbeque will begin at approximately 5 p.m. Please RSVP to Mari Guardini at 651-222-7227 or at mguardini@richardsonrichter.com by June 8, 2005. A map will be provided at the April MARRA meeting.

The June MARRA Annual meet-

ing will be hosted the next day by the Polk County Solid Waste Resource Recovery Plant in Fosston. Hotel accommodations are available at either the Super 8 Motel, located in Fosston, or at the Shooting Star Casino, located in Mahanomen (thirty minutes drive to Fosston). Please call for reservations: Super 8 Motel at 218-435-1088 or Shooting Star Casino at 800-453-7827.

Hope to see you there!

JUNE MARRA ANNUAL MEETING DETAILS

Date Friday, June 17
10 a.m. to 2 p.m.

Agenda

An overview of ash utilization studies from around the state.

Meeting Location

Stadium Restaurant
104 Amber Ave.
Fosston

Tour Location

Polk County Solid Waste
Resource Recovery Plant
Fosston Industrial Pak
708 8th Street NW
Fosston, MN 56542
218-435-6501

Tour Information

If you are interested, Bill Wilson is prepared to give MARRA members a tour of the ash utilization road at 2 p.m. on

June 16.

Two facility tours will be given on June 17; one before the meeting at 8:00 a.m. and one after lunch at approximately 1:00 p.m.

Questions Contact Bill Wilson at 218-435-6501 or Trudy Richter, Richardson Richter, at 651-222-7227.



2005 LEGISLATIVE UPDATE

The following are updates on pending legislation that pertains to MRRRA members:

Bonding Bill

Last year's bonding bill, which included CAP grants for some of our facilities, is being heard this year.

\$12,000,000. Last biennium the processing credit was only funded to \$8,000,000.

Industrial Waste Definition and Tax Issue

The Minnesota Office of Environmental Assistance (MOEA) convened a

taxes.

Inverse Condemnation

There is an effort to limit what cities can do regarding organized collection. Per this bill, if a city wanted to contract with one or more haulers and a prior service



“Bricks and Mortar”

We are seeking an exemption from sales tax for the building envelope similar to what we already receive on processing equipment. The bill has been heard and was well received in committee. Additionally, there is precedence for this because of other biomass and wood projects.

Processing Credit

The credit sunsets this June 30, 2005 unless there is a legislative change. Minnesota Pollution Control Agency (MPCA) says there is no money from the Solid Waste tax to reinstate the credit. Lobbyists are working hard to keep the credit in place and to find funding. The original funding was for

stakeholder group to examine the issue. Likely findings are that there is not enough data to indicate a trend; however, there is some indication at a local level that there may be a shift of waste occurring (formerly MSW now being landfilled as industrial waste to avoid the higher solid waste tax). More data will be needed to evaluate whether or not a trend is emerging. Gaps in information were also identified and it is hopeful that the MOEA will get the information they have requested to fill in those gaps. Currently, there is little support for changing the tax structure. Various individuals are looking at modifying the definition of industrial waste so haulers are not making decisions solely to avoid

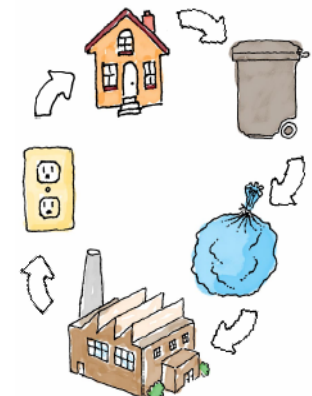
provider is put out of business, the city would have to pay that hauler lost profits. This is VERY BAD PUBLIC POLICY.

MSW as Biomass and Renewable

We are in discussions to clarify the original bill of two years ago so that 1% of all retail power to meet the renewable goal of the State must be biomass.

For further information please contact Trudy Richter, MRRRA Executive Director.

** Picture is courtesy of the State of Minnesota. <http://www.state.mn.us>*



QUICK FACT

Minnesota Waste-to-Energy Facilities generate enough electricity to power 110,000 residential homes per day. Where does your electricity come from?

MRRA 2004 BOARD OF DIRECTORS

Brian Kletscher
Chair
Redwood County
30427 County Hwy 10
Vesta, MN 56292
507-762-3376

John Sigmond
At-Large
Hennepin Energy Resource
Company
505 6th Avenue No.
Minneapolis, MN 55405
612-332-9423

Dennis Nagle
Secretary
Pope/Douglas
2115 So Jefferson
Alexandria, MN 56303
320-763-9340

Gene Mossing
Vice Chair
Olmsted County
2122 Campus Drive SE
Rochester, MN 55904
507-285-8231

Bill Wilson
At-Large
Polk County
Solid Waste Resource
Recovery Plant
P.O. Box 605
Fosston, MN 56542
218-435-6501

Lee Eberley
Treasurer
Xcel Energy
414 Nicollet Mall
Minneapolis, MN 55401
612-330-5596

Wayne Hanson
At-Large
Great River Energy
P.O. Box 800
Elk River, MN 55330
763-441-3121

MARCH 2005

SUN	MON	TUE	WED	THU	FRI	SAT
		1	2	3	4	5
6	7	8	9	10	11	12
13	14	15	16	17	18	19
20	21	22	23	24	25	26
27	28	29	30	31		

SCHEDULE OF SPRING EVENTS

APRIL

19-22

MRRA Operating Training Course

Location: Southeast Technical
Red Wing Campus
308 Pioneer Road, Red Wing

Contact: Peter Torkelson
507-467-4500

22

MRRA General Meeting

Time: 10 a.m. to 2 p.m.

Location: South Metro
Resource Recovery Facility
13020 Dem-Con Drive
Shakopee

JUNE

16

MRRA Barbeque

Location: Bill Wilson's Ranch
Fosston

17

MRRA Annual Meeting

Time: 10 a.m. to 2 p.m.

Location: Stadium Restaurant
104 Amber Ave.
Fosston

APRIL 2005

SUN	MON	TUE	WED	THU	FRI	SAT
					1	2
3	4	5	6	7	8	9
10	11	12	13	14	15	16
17	18	19	20	21	22	23
24	25	26	27	28	29	30

MAY 2005

SUN	MON	TUE	WED	THU	FRI	SAT
1	2	3	4	5	6	7
8	9	10	11	12	13	14
15	16	17	18	19	20	21
22	23	24	25	26	27	28
29	30	31				

JUNE 2005

SUN	MON	TUE	WED	THU	FRI	SAT
			1	2	3	4
5	6	7	8	9	10	11
12	13	14	15	16	17	18
19	20	21	22	23	24	25
26	27	28	29	30		

A LOOK AT WTE IN MINNESOTA

What does the WTE industry contribute to Minnesota economy?

Waste Processing

Waste is processed at 11 facilities in Minnesota with the annual capacity of **1.43 million tons** of waste.

- Three Mass Burn Facilities with a capacity of 433,620 tons per year
- Three RDF Facilities with a capacity of 886,950 tons per year
- Five Modular Facilities with a capacity of 113,004 tons per year

Original Capital Investments

The total original capital investments varied for each facility. The sum of the total original capital investments for just five facilities was \$71,660,275.¹

Employees

The following seven facilities alone employ **174** full time employees: City of Fergus Falls WTE Facility, Covanta Energy - Hennepin Energy Resource Company, Red Wing Waste Incinerator, Olmsted County WTE Facility, City of Perham Resource Recovery Facility, Polk County Solid Waste Resource Recovery

Plant, Pope-Douglas Resource Recovery Facility, and Xcel Energy - Red Wing Steam Plant.

Renewable Energy

Over 111,000 homes in Minnesota are served by WTE renewable energy. Additionally, the following steam clients are served:

- 3M's Abrasives Plant
- Douglas County Hospital
- Bongard's Creamery
- Red Wing Shoe Tannery
- Sun-Opta
- Federal Medical Center
- Fosston Industrial Park
- 26 businesses in downtown Rochester
- Fergus Falls Regional Treatment Center
- Several Otter Tail County buildings
- Minnesota Dehydrated Vegetables
- Tuffy's Dog Food

State Grants

The Minnesota Office of Environmental Assistance (MOEA) Solid Waste Processing Facilities Capital Assistance Program (CAP) has provided \$20,952,143 in matching

funds to facilities across the state. ¹¹ In addition, the TEST funding provided \$580,193 for air and ash testing at WTE facilities. Therefore, total state grant dollars total **\$21,532,336** since 1984.

Recent APC Improvement Investments

Over \$30 million dollars has been spent by the City of Fergus Falls WTE Facility, Olmsted County WTE Facility, Polk County Solid Waste Resource Recovery Plant, Pope-Douglas Resource Recovery Facility, and Xcel Energy - Red Wing Steam Plant for recent APC improvements.

Why?

The MRRA hopes to gather this information from all the facilities in Minnesota and would like to thank those that have already submitted their data. This data will be used by the MRRA lobbyist during the legislative session. If you have yet to submit data or have questions on the data please contact Kate Theisen at 651-222-7227.



Footnotes

¹This value includes the original start cost from the following facilities: City of Fergus Falls WTE Facility, Olmsted County WTE Facility, Polk County Solid Waste Resource Recovery Plant, Pope-Douglas Resource Recovery Facility, and Xcel Energy - Red Wing Steam Plant.

¹¹Please note that \$2,000,000 was for the facility in Winona that was never built but the money was distributed.

CONTACTS

Dan Carlson
Mayo Incinerator
507-284-9400

Lee Eberley
Xcel Energy
612-330-5596

Michael Hanan
Otter Tail County
218-739-2271

Wayne Hanson
Great River Energy
763-441-3121

Jeff Harnly
Xcel Energy
651-385-5603

Bill Helliwell
Elk River NRG
763-441-9811

Jeff Huppert
Red Wing Incinerator
651-385-3658

Mark Larson
City of Fergus Falls
218-739-3467

Gene Mossing
Olmsted County
507-285-8231

Dennis Nagle
Pope/Douglas
320-763-9340

Brian Schmidt
Barlow Projects
218-346-4404

John Sigmond
Covanta Hennepin Energy
Resource Co.
612-332-9423

Bill Wilson
Polk County
218-435-6501

Trudy Richter
MRRA Executive Director
651-222-7227

MARK YOUR CALENDAR'S

- **MRRA Meeting and New Member Celebration—April 22 in Shakopee**
- **MRRA Operating Training Certification Course—April 19 to 22**
- **MRRA Barbeque and Annual Meeting—June 16 -17 at Fosston**

477 Selby Avenue
St. Paul, MN 55102
Phone: 651-222-7227
Fax: 651-223-5229
Email: Trichter@richardsonrichter.com
Web: www.mnresourcerecovery.com



The Minnesota Resource Recovery Association (MRRA) is a public/private partnership seeking to find a collective voice regarding integrated waste management practices at the Minnesota Pollution Control Agency and the Legislature. Together the MRRA facilities seek to meet the resource recovery needs of Minnesota.